

Making Great Places

The Royal Docks will have improved and newly created public spaces that host a range of activities and uses, making a vibrant, inclusive public realm enhancing health, wellbeing, social and cultural life. The Dock water and edge will be accessible for everyone to use and enjoy with opportunities for leisure and recreation.

What we have heard so far...

Over 50% of people said they want public places to be: **safe, supporting the social life of the community, green and nature focussed.**

People would like to see more **places to eat and drink** along with **shops and street markets**

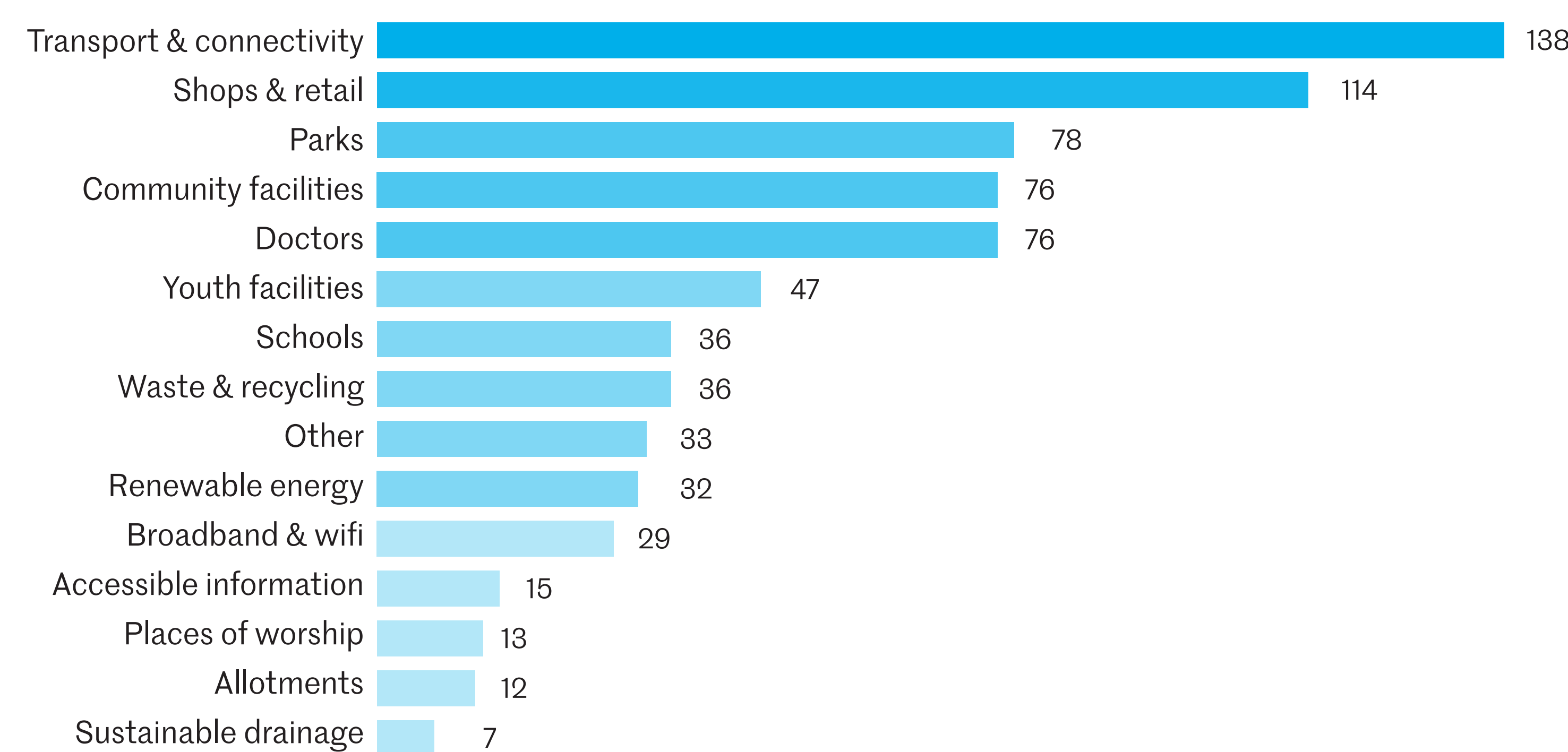
Over 33% of people would like to see **increased and improved local amenities and social infrastructure**, (e.g. parks, community facilities, doctors and youth facilities)

History and heritage are important to local people. People felt **local histories and communities** should be **protected and celebrated**.

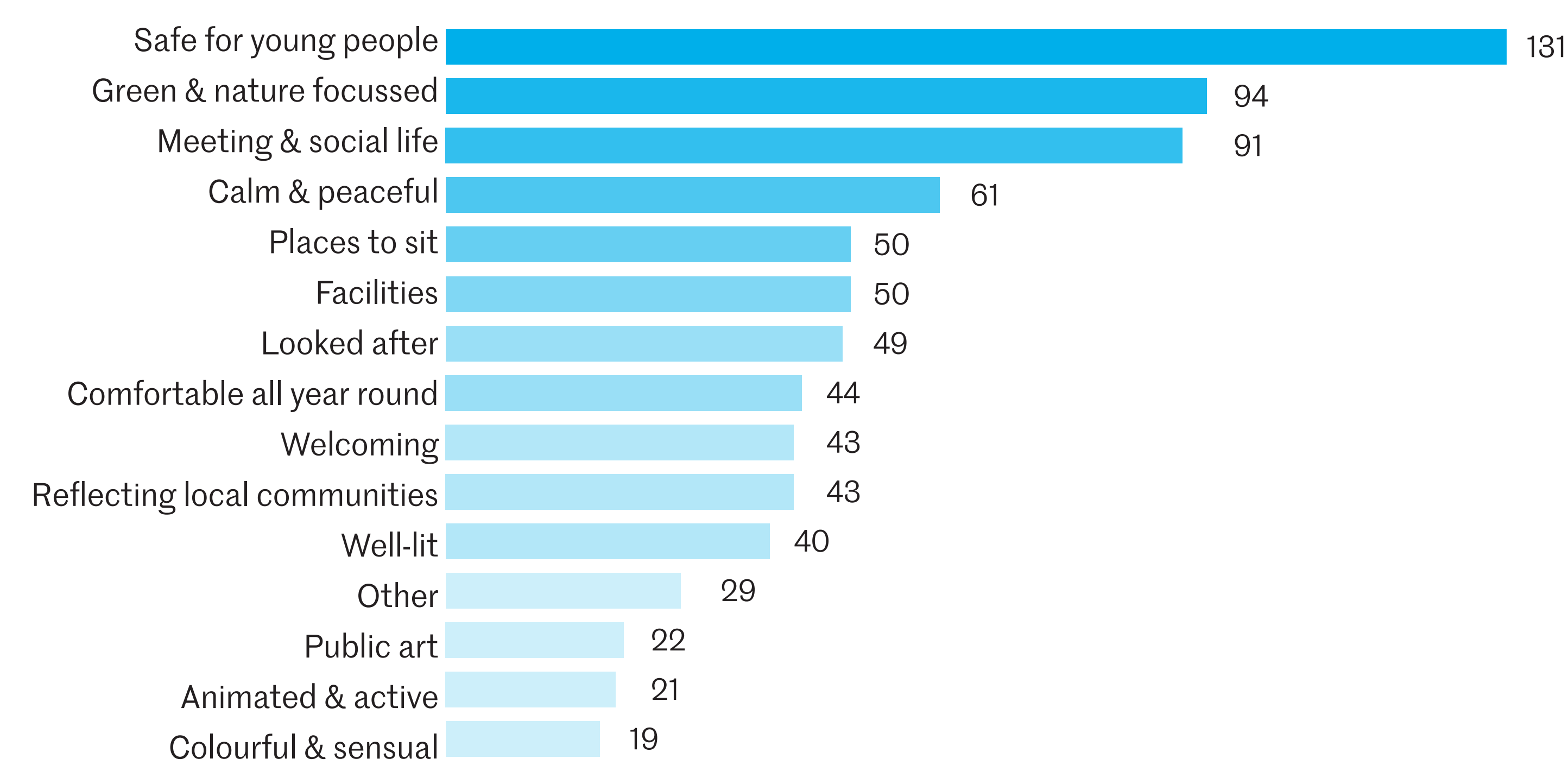
The water is an attractive asset. 25% of respondents often use the water or dock waterside, but would like to see improvements to routes and access.



Given the level of change expected, what areas of improvement do you think are most important? Choose 3 (742 responses)



What are your top priorities for making great public places in the Royal Docks and surrounding areas? Choose 3 (787 responses)

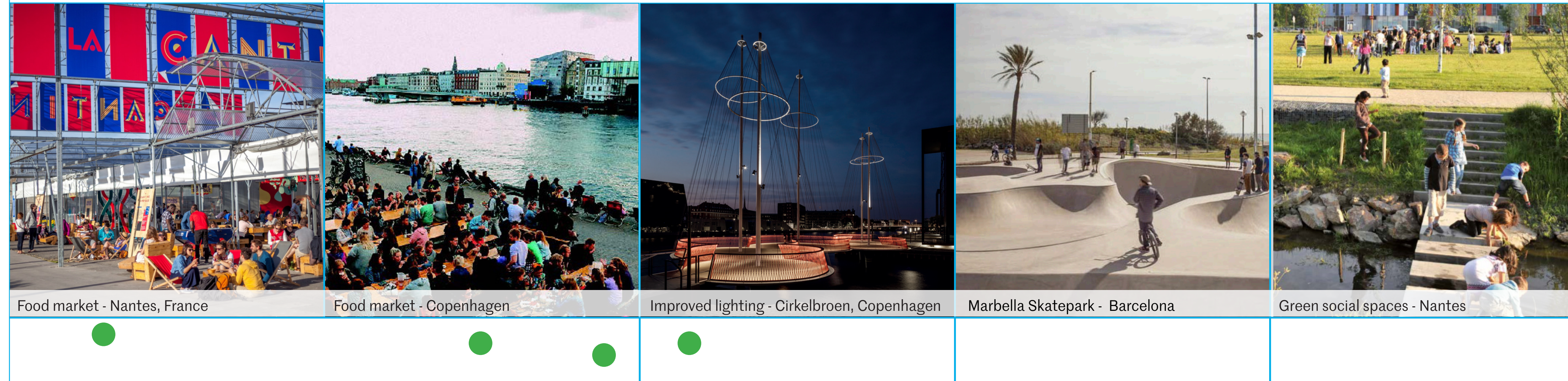


Continuing the conversation...

We want to continue the conversation in today's workshop. Here are some example images and opportunities for improvement to inspire our discussion. Tell us what you think of these observations and examples. Do you have any other suggestions?

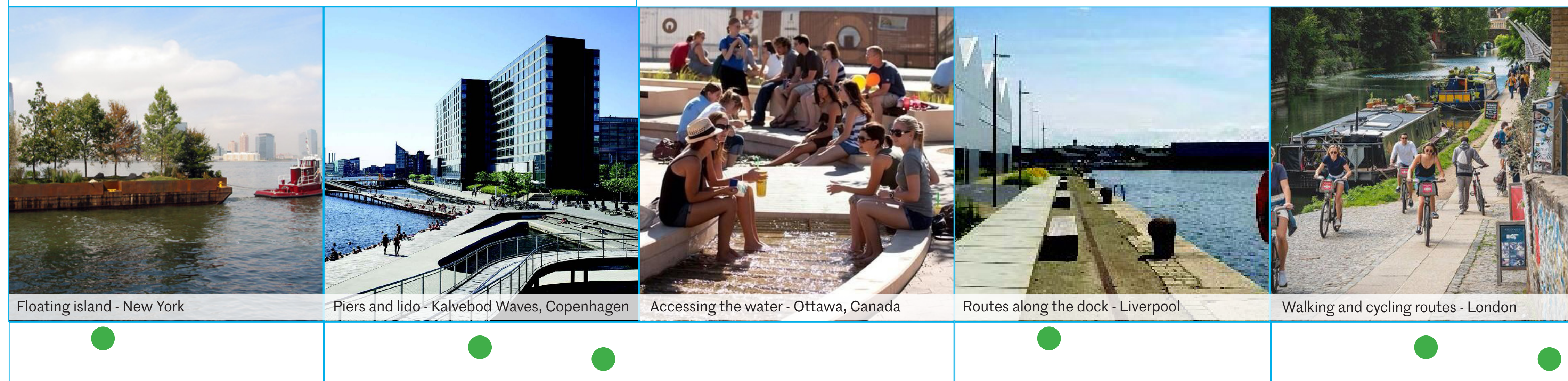
1 Places to meet and socialise

Creating places to meet and socialise



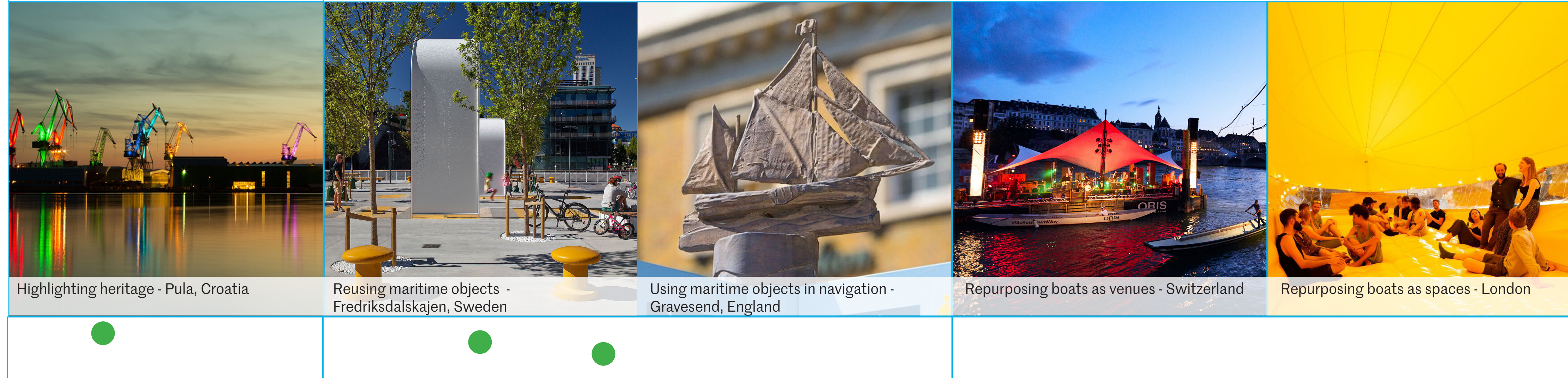
2 Bringing the water into public use

A variety of ways in which the water can be enjoyed and accessed by the community, including active water uses and a publicly accessible dock edge.



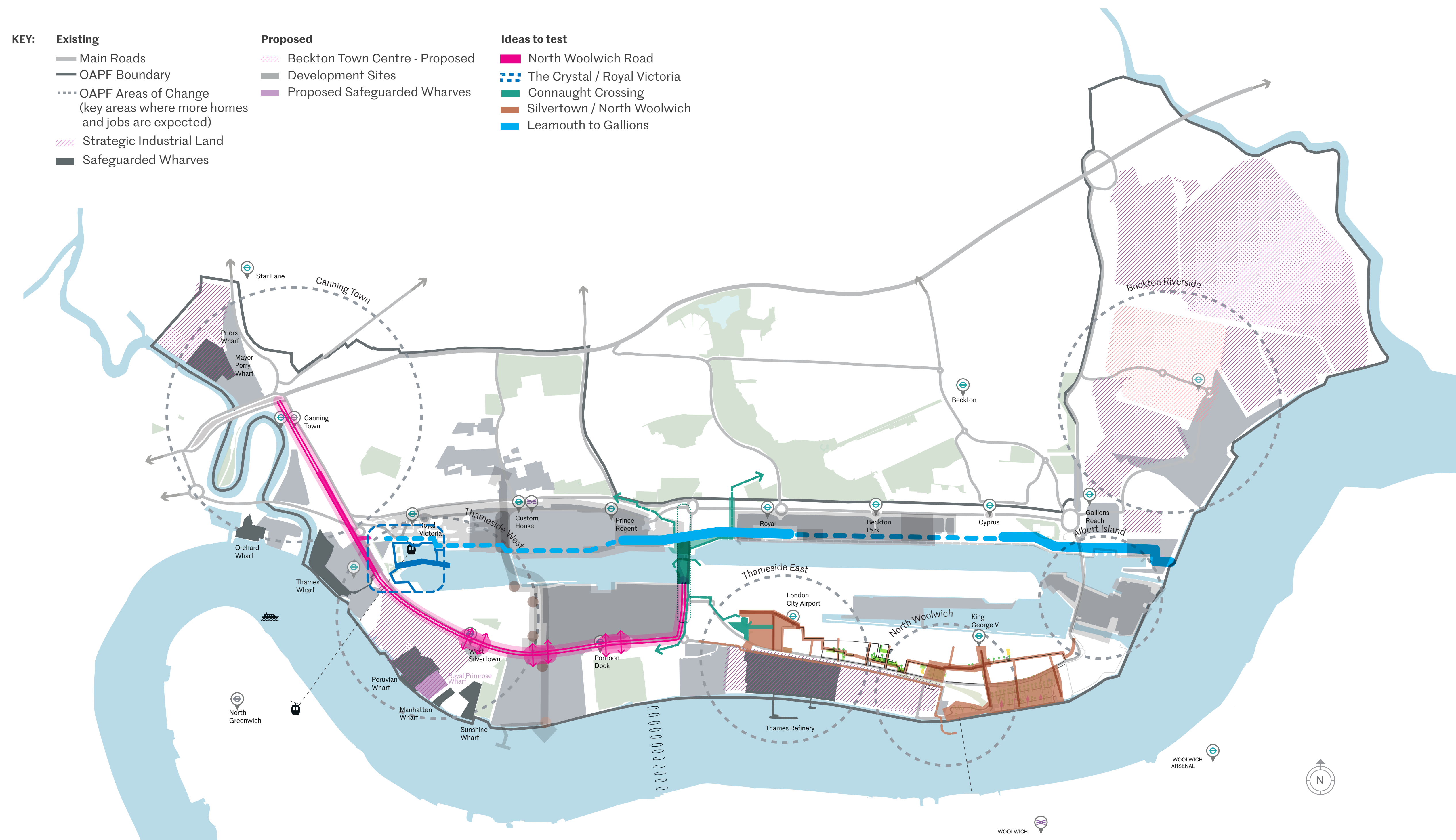
3 Celebrate local history

The Royal Docks is rich in history and heritage, these are some ideas about how to highlight and celebrate these assets.



KEY:

- Existing**
 - Main Roads
 - OAPF Boundary
 - OAPF Areas of Change (key areas where more homes and jobs are expected)
 - Strategic Industrial Land
 - Safeguarded Wharves
- Proposed**
 - Beckton Town Centre - Proposed
 - Development Sites
 - Proposed Safeguarded Wharves
- Ideas to test**
 - North Woolwich Road
 - The Crystal / Royal Victoria
 - Connaught Crossing
 - Silvertown / North Woolwich
 - Leamouth to Gallions



Tell us what you think of these observations and examples. Do you have any other suggestions?

