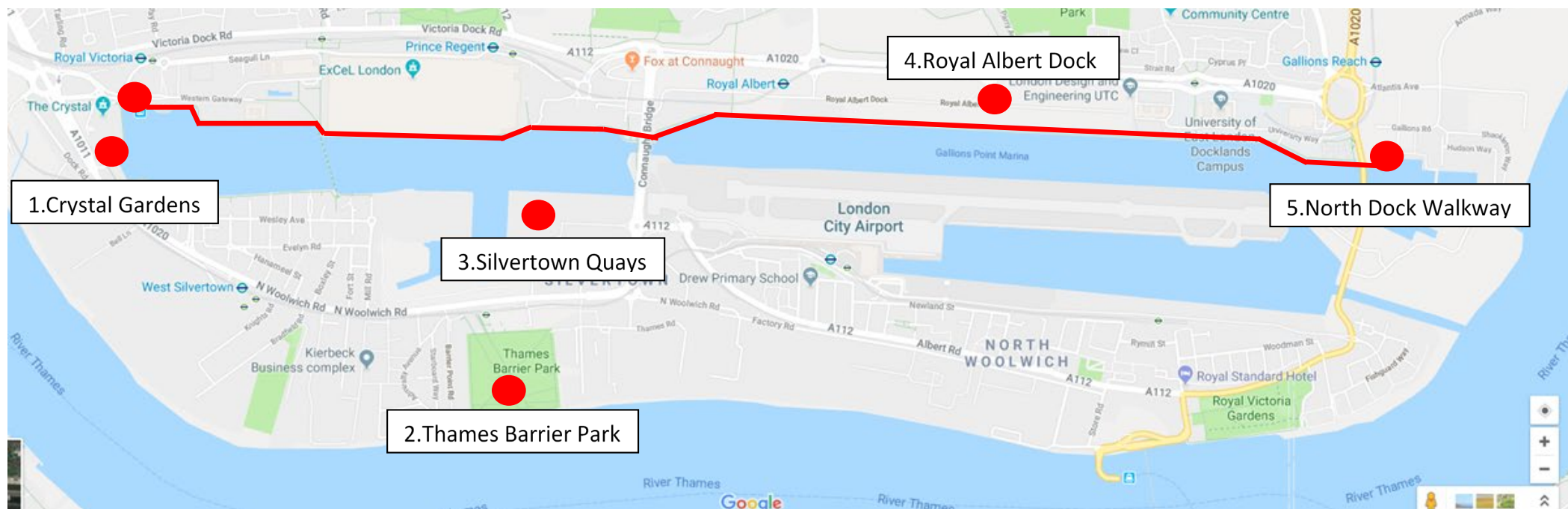




APPENDIX A: Key Locations



	Location
1	Crystal Gardens, Crystal Lawns & the Beach
2	Thames Barrier Park: Café, Pavilion, Lawns
3	Silvertown Quays: Mill Square, Silvertown Square
4	Royal Albert Dock: Compressor House, Front Lawn, East & West Lawn
5	North Dock Walkway

1. Crystal Gardens

Royal Victoria Docks, London, E16 1GB

This area is where many visitors first experience the Royal Docks, arriving via cable car or DLR and is a key thoroughfare for locals and workers. Collectively known as Crystal Gardens, the spaces around the innovative Crystal Building offer an unparalleled opportunity for outdoor programming including two green spaces; Crystal Lawns (in front), the Garden (to the side), as well as a deck, beach and water access via a slipway into Royal Docks.

Please note that Kids Summer Splash will take place on the Royal Victoria Dock Decking Area between 27 July – 30 August 2019

Transport links:

- Royal Victoria DLR
- Pontoon Dock DLR
- Emirates Air Line
- Bus routes 474/241

Site Area	Suitable for	Size/capacity	Floor	Power	Access	Facilities
Crystal Gardens	Workshops Music performances Performing arts	Crystal Gardens 3,500m2	Turf lawn	3 phase - 32 amp	Yes	Water standpipe Lighting
Crystal Lawns (x2)	Pop up activity Small activations		Turf lawn	N/A	Yes	N/A
Community Hut	Workshops		Yes		Yes	Toilet
Dock decked area	Pop up activity Volleyball		Sand and wooden decking	N/A	Yes	N/A





The Crystal Building & Lawns



Crystal Gardens & Royal Victoria decked area in 2018



New layout of Crystal Gardens from June 2019

2. Thames Barrier Park

North Woolwich Rd, London E16 2HP

Overlooking the Thames Barrier, this 6,000m² landscaped park is a hidden gem with abundant wildlife. Beautifully designed with well - maintained grounds, it benefits from picnic and children's play areas, a basketball court, a pavilion, events lawn and a café managed by Peoples Kitchen. The park has great potential to host a wide range of events, educational programmes and activities.

Please be aware that there is no vehicle access to the event lawn and equipment would need to be trolleyed. The park is open during daylight hours only.

Transport Links:

- Pontoon Dock DLR
- Bus route 474

Site	Suitable for	Size/capacity	Floor	Power	Access	Facilities
Cafe	Music performances Workshops	Thames Barrier Park 6,000m ²	Wooden floors Outdoor wooden decking area	32 amp	Wheelchair Accessible	Mains water and public toilet
Pavilion of Remembrance	Music performances Performing arts Workshops		Wooden decking	N/A	Wheelchair Accessible	N/A
Event Lawn	Music performances Performing arts Fitness classes Walking/art trails Nature trails		Turf Lawn Sloped grass with wooden decked area	N/A	Wheelchair Accessible	N/A



Pavilion of Remembrance



Café



Thames Barrier Park



Thames Barrier Park

3. Silvertown Quays

Rayleigh Road, London, E16 1UR

On the South side of the docks lies Mills Square, a vacant development space which sits south of the iconic former flour mill Millennium Mills.

To the east of Millennium Mills (across pontoon dock) is Silvertown Square, just over 4 hectares of open space overlooking the dock.

NB: Millennium Mills is a restricted building and therefore not available for use.

Transport Links:

- Pontoon Dock DLR
- Bus route 474

Site	Suitable for	Size/capacity	Floor	Power	Access	Facilities
Silvertown Square	Large scale events. Music Performances Dance Walk/trails Workshops	4.4ha	Concrete/gravel	N/A	Uneven surfaces Closed site/access by arrangement	No power, water or toilets
Mills Square	Projection Mapping on to Millennium Mills or Silo D Workshops Music Performance Walk/trails	8,300m2	Concrete/gravel	N/A	Un-even surfaces Closed site/access by arrangement	N/A



Mills Square



Millennium Mills



Silvertown Square



NB: Mills Square and Silvertown Square are currently closed to the public are vacant sites with no services. Activities here will need services (water, power, security, fencing to dock edge) and careful management. Please note most events and activities (beyond walks and workshop type activity) would require significant budgets.

4. Royal Albert Dock

1000 Dockside Road, London E16 2QU

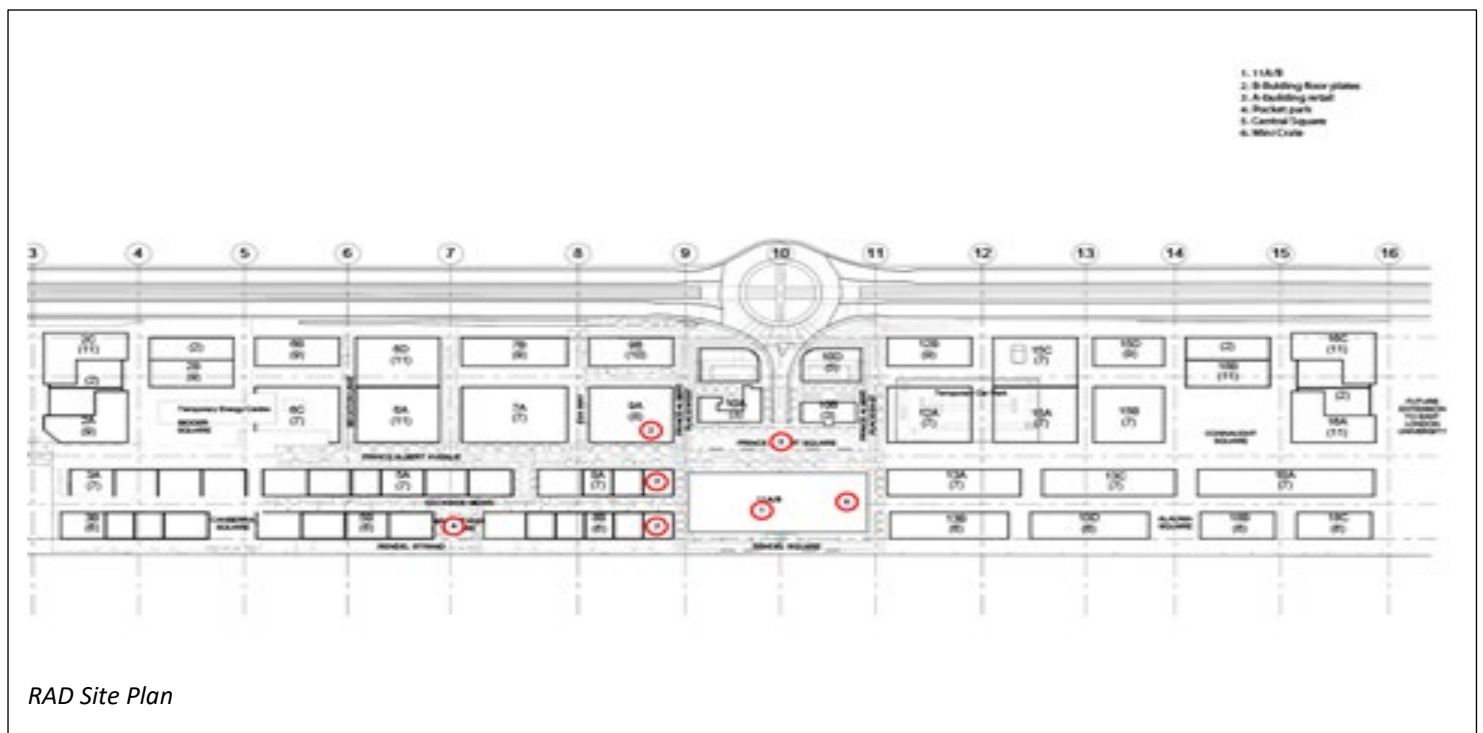
This Royal Docks, newest and largest development, named RAD (Royal Albert Dock) is on the waterside. The available spaces include new development (indoor/outdoor) and vacant space, Compressor House (a former refrigeration store) and a lawn that overlooks Royal Albert Dock and City Airport.

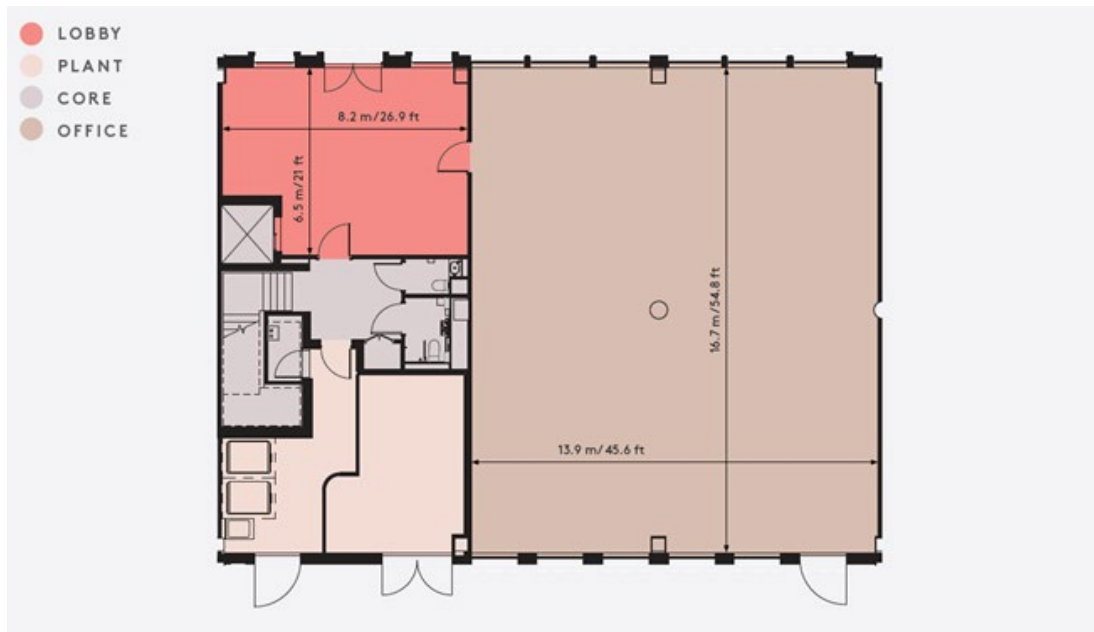
Transport Links:

- Royal Albert DLR
- Beckton Park DLR
- London City Airport DLR (walkable)
- Bus routes 678/376/300

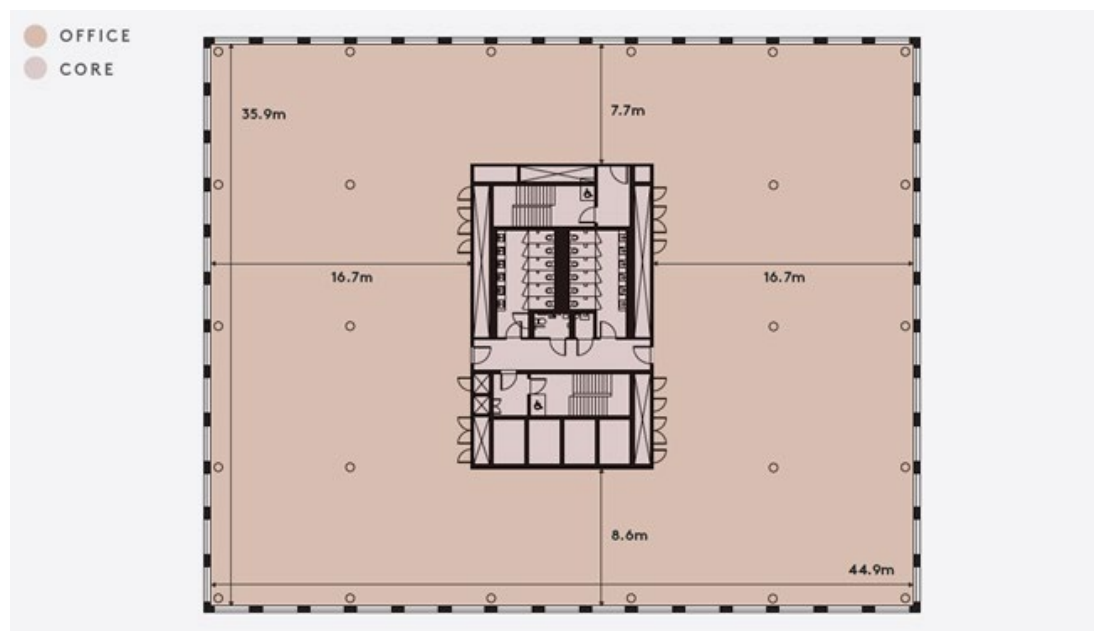
SITE	Suitable for	Size/capacity	Floor	Power	Access	Facilities
Compressor House	Workshops Music performances Theatre Pop up events	200	Part carpeted/ wooden flooring	X6 32-amp sockets around the room	Yes – ramp, fully wheelchair accessible	Toilets Mains water Internet access on the ground floor and mezzanine level New raised platform area for talks/performance Additional room, ideal for green room, event office.
Lawns	Music performance Theatre Arts performance			N/A	Yes	No
11a & 11b (outdoor)	Theatrical performances Marquees based activity	4,725sqm 105x45m 14,000 (based on 2ppl/1sqm)	Hard surface Levelled tarmac	N/A	Yes	No running water Pop up container installation TBC located on the East side of space.
Building A Retail (Townhouse)(indoor) • Ground Floor	Gallery type activations Cocktail/standing events Art installations	13.9m x 16.7m Total: 232.13sqm 150	Concrete	Available but not electrical floor distro		Lobby entrance

Building B (Altitude) (indoor) ▪ 8th (top) & 2nd floor	Talks Exhibitions	8 th Floor 44.9m x 35.9m 2 nd Floor 1,381sqm (exc core) 450	8 th Floor Carpeted 2 nd Floor concrete	Available but not electrical floor distro	Yes, wheelchair accessible	Toilets including x1 disabled
Pocket park (outdoor) – Singlo Square	Smaller external activations Art installations	26x18m Usable area around landscaping / memorial	Paved surface	N/A	Yes, wheelchair accessible	Mains water
Central Square (in front of Heritage Buildings outdoors)- Dauphin Square	External activations Outdoor markets	80x12m total Usable area around water feature	Paved surface	4x pop- up power supply points	Yes, wheelchair accessible	Water jets from fountains Street lighting





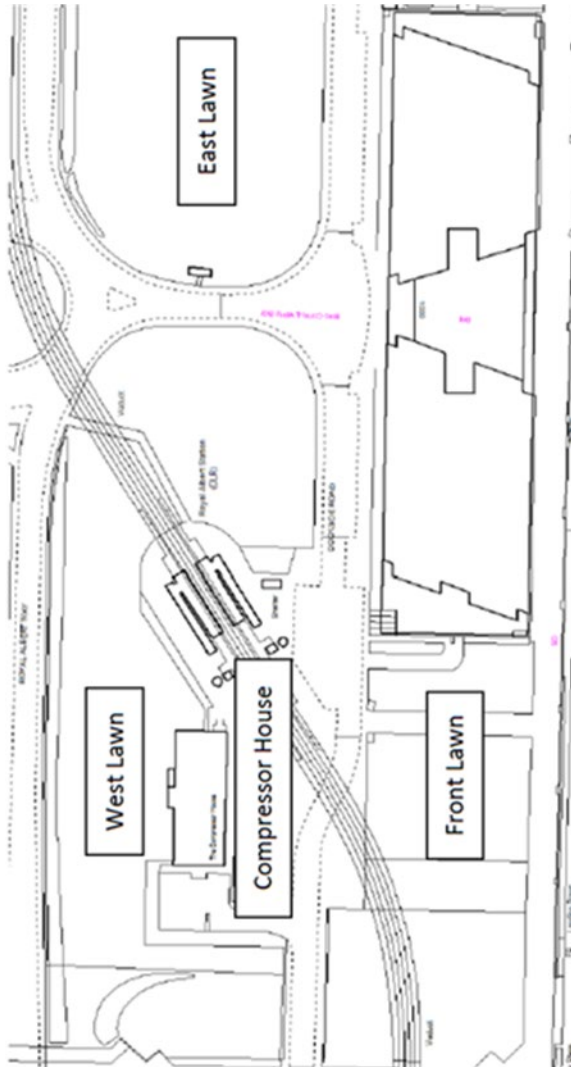
Building A- Ground Floor Retail



Building B- Typical Floor Plan



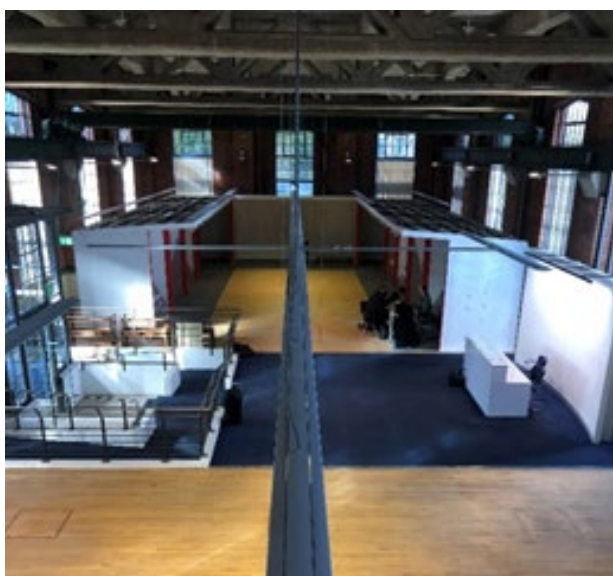
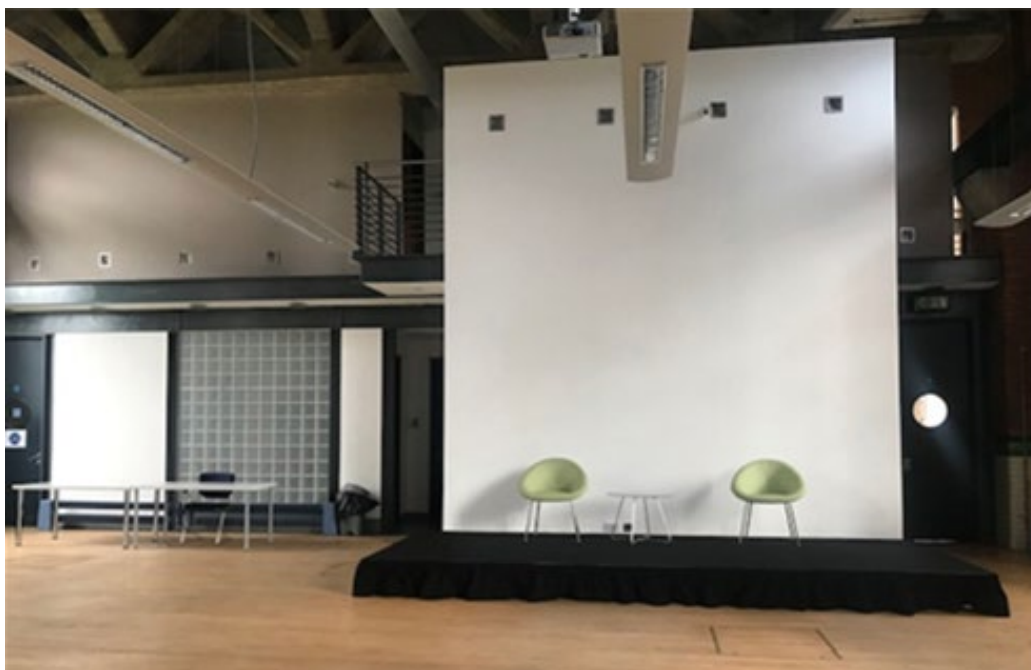
Front Lawn



*Royal Albert Dock
site plan*



Royal Albert Dock



Compressor House

This 3.8km promenade on the North side of the docks, stretches from the Crystal at the far west past the Good Hotel, the ExCel centre, Compressor House, Newham Council offices and the University of East London. It leads all the way to the Sir Steven Redgrave Bridge at the east end of Royal Albert Dock.

The walkway is a huge opportunity to animate the whole length of the dockside. Reopening in June 2019, it has been closed in sections due to construction for several years. The flat waterside route offers opportunities for activities such as walks, cycling and scootering with great views of the dock edge, City Airport and Millennium Mills. Please note that the installation of structures isn't possible along this route due to weight loadings.

Transport links:

- Royal Victoria DLR
- Emirates Air Line
- Custom House DLR
- Prince Regent DLR
- Beckton Park DLR
- Royal Albert DLR
- Cyprus DLR
- Gallions Reach DLR
- Bus routes 474/241

SITE	Suitable for	Size/capacity	Floor	Power	Access	Facilities
North Dock Walkway	Walking trails Art trails Dance Cycle Routes Jogging routes Treasure Hunts	3.8 km in length	Paved/ cobbled in places	N/A	Level/hard surfaces	Public toilets at the Crystal, ExCel Centre and Building 1000 Newham Council



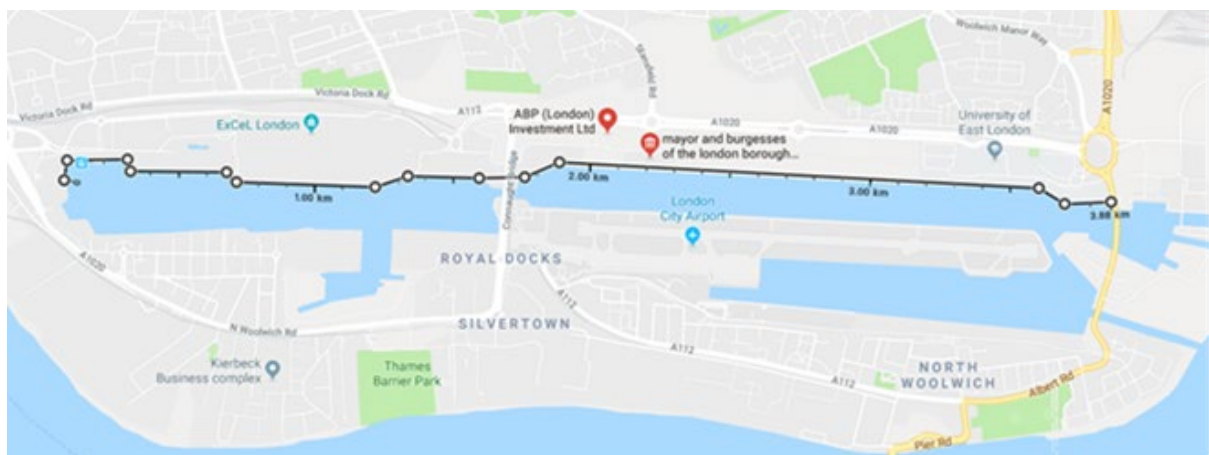
North Dock walkway – Good Hotel



North Dock walkway



University of East London



The 3.8km walkway route along the northern edges of Royal Victoria Docks and Royal Albert Dock (RAD).

